

# MUG HOLDER 40200

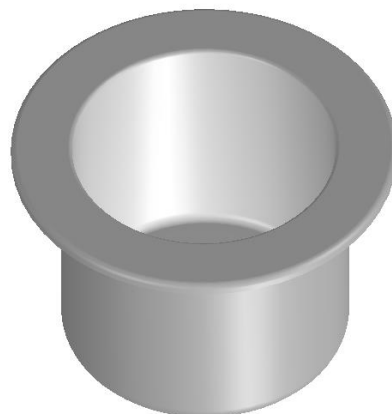
## Mounting instructions

### Fixings

- Sealant Wurth Powertack or the like.
- Screw  $\varnothing$  4 mm for water removal nipple.
- Cable tie

### Installing

- Drill the 71mm hole in the right place.
- Drill the water removal hole (4mm) through the bottom of the nipple and install the tube (6 mm). Lock with cable ties. lead the hose to a suitable location or water removal nipple.
- Place the sealant.
- Press the holder in place.
- Let the sealant dry as instructed



Place a thin layer of sealant under the collar

Drill the water removal hole. the nipple can be removed if it is not needed.

