

HINGES & COVERS 75XXX/77XXX

Mounting instructions

Fixings

- Screw or rivet max. $\varnothing 4,8/M4$

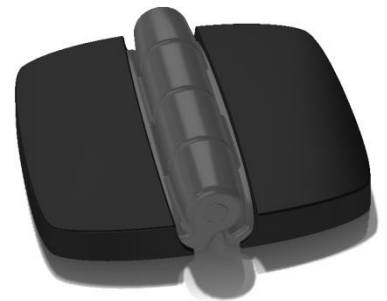
Installing

When using the cover, use the countersunk screws. The screw heads must not be above the surface of the hinge.



The cover

The cover locks in place by pressing the cover locking nails to slots in the hinge.



Make sure the nails are locked in place. A silent click is heard when the locking nails goes right in place.

